

STAR PUBLIC SCHOOL

Dear Parents,

Today's assignment (class 2 nd)

👉 **Maths - Expanded Form, Standard Form, Place Value & Face Value in Classwork Notebook**

👉 **English - Chapter- 2 Explanation+ Back Exercises in Book**

👉 **Hindi - पाठ 2 मौखिक प्रश्न उत्तर**

👉 **Earth Day Act**

Home Assignment -

👉 **Maths - Number Names (171 - 200) in Notebook**

👉 **Hindi शब्द अर्थ**

2:04 pm ✓✓

15-04-25

CW-

Expanded form

$$\begin{array}{c} \text{H} \quad \text{T} \quad \text{O} \\ \text{a) } 1 \quad 7 \quad 4 = 100 + 70 + 4 \end{array}$$

$$\begin{array}{c} \text{H} \quad \text{T} \quad \text{O} \\ \text{b) } 8 \quad 8 \quad 6 = 800 + 80 + 6 \end{array}$$

$$\begin{array}{c} \text{H} \quad \text{T} \quad \text{O} \\ \text{c) } 4 \quad 3 \quad 6 = 400 + 30 + 6 \end{array}$$

$$\begin{array}{c} \text{H} \quad \text{T} \quad \text{O} \\ \text{d) } 9 \quad 0 \quad 4 = 900 + 00 + 4 \end{array}$$

$$\begin{array}{c} \text{H} \quad \text{T} \quad \text{O} \\ \text{e) } 9 \quad 0 \quad 0 = 900 + 00 + 0 \end{array}$$

Standard form

$$a) 400 + 70 + 3 = \underline{473}$$


$$b) 500 + 40 + 9 = \underline{549}$$


$$c) 600 + 80 + 2 = \underline{682}$$


$$d) 700 + 70 + 7 = \underline{777}$$


$$e) 800 + 4 = \underline{804}$$

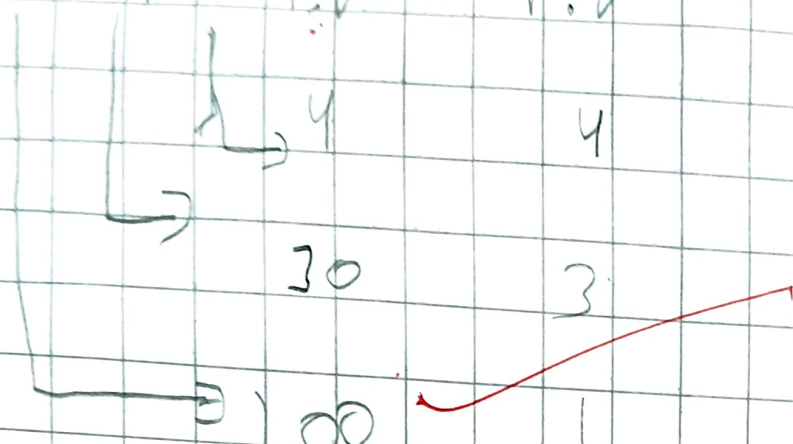

place value

4 T 0

1 3 4

P.V

F.V

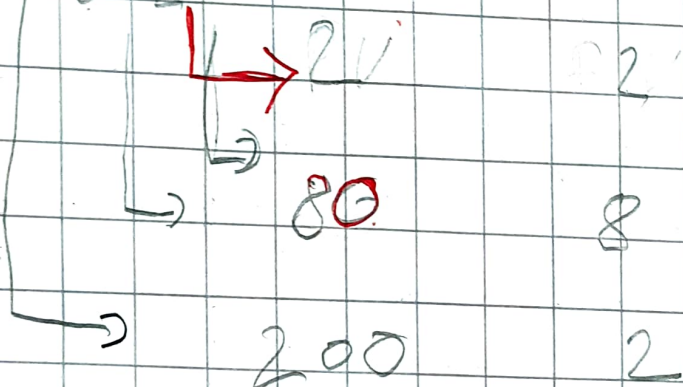


4 T 0

2 8 2

P.V

F.V



~~☆~~ (K) 15/04/25

15.04.25

2

The Bee

Reading

Buzz! goes the bee
Hour after hour
Buzz! goes the bee
From flower to flower.

Sucking out the nectar
Flying it home
Storing up the nectar
In the honeycomb.

Buzz! goes the bee
Making honey so sweet.
The bee makes the honey
That I love to eat.



Learn Words

sucking : drawing in with mouth

nectar : sweet juice in a flower (honey)

storing : keeping aside for future use

honeycomb : place where bees store honey



Cw
15.04.25

A1. Choose the correct answer.

1. What is the sound the bee makes?

a) hiss

b) buzz

c) moo

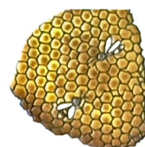


2. Where does the bee store the nectar?

a) in a jar

b) in the honey can

c) in the honeycomb



3. When something is very sweet, we say it is 'as sweet as',

a) sugar

b) honey

c) chocolate



4. What is the home of the bee called?

a) bee house

b) honey home

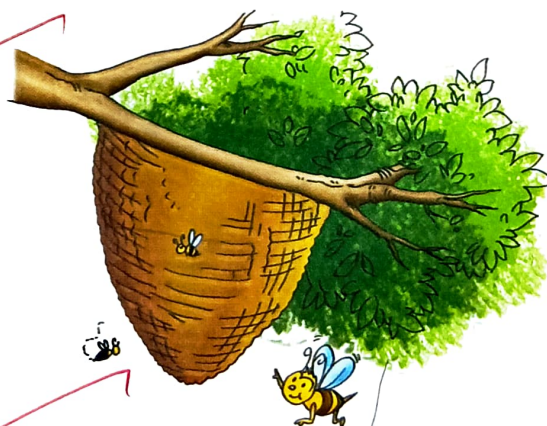
c) beehive

5. The speaker of the poem

a) doesn't like honey.

b) loves honey.

c) likes honey.



A2. Fill in the blanks.

1. The bee goes buzz How after How.
2. The bee goes buzz from flower to flower.
3. The bee goes from flower to flower sucking out the nectar.
4. The bee makes sweet honey.

B



Word Corner

B1. Rearrange the letters to get meaningful words. The words are all from the poem.

1. ectnra nectar
2. zubz buzz
3. ebe bee
4. oeynh honey
5. lwefro flower
6. rhuo how



B2. The words below are spelt wrongly. Write the correct spellings.

1. hoem home
2. sukcing sucking
3. fliyng flying
4. honycmb honeycomb
5. swiet sweet



C



Talk Corner


Imagine that you and your friends went on an expedition to collect honey. Talk for three minutes to the class about your experience.


D




Sounds Corner

D1. *Tale* and *pale* are rhyming words. Most poems have lines ending with rhyming words. Write a new word in each box below that rhymes with the given word.

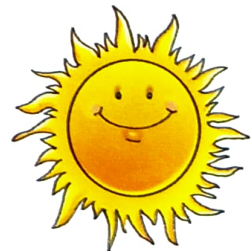
	hour
.....	

	home
.....	

	eat
.....	

D2. Write two rhyming words each for the following words.

- | | | |
|---------|-------------|-------------|
| 1. pen | <u>ten</u> | <u>men</u> |
| 2. top | <u>shop</u> | <u>hop</u> |
| 3. book | <u>cook</u> | <u>cook</u> |
| 4. lay | <u>hay</u> | <u>may</u> |
| 5. sun | <u>gun</u> | <u>bun</u> |



E



Creative Corner

E1. This poem is about a bee. Divide the class into four groups. Each child will bring a poem about an animal, bird or insect. The child will read out the poem to his/her group.

E2. The word **bee** has two **e**'s. Write five more words with **ee**. The double **e** can come in the middle or at the end.

1. This is what parents pay to the school.

f e e s

2. There are seven days in this.

w e e k

3. The alarm clock goes

b e e p

4. The sea is very

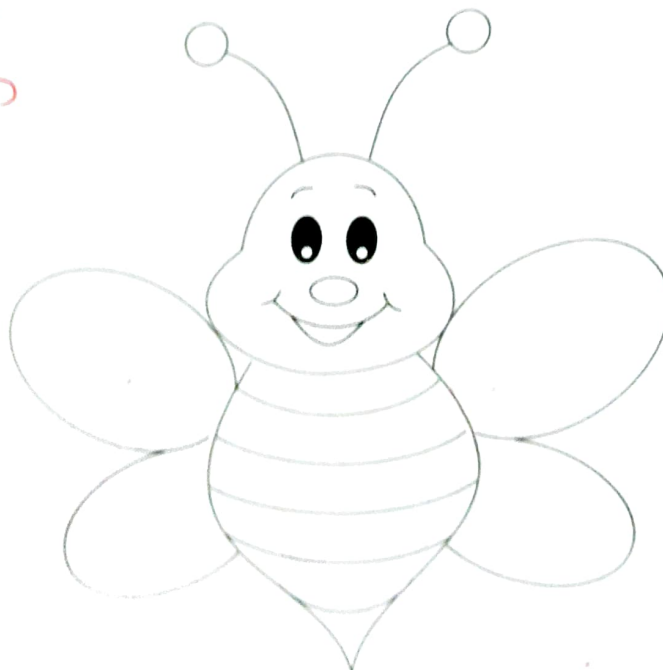
d e e p

5. When you don't have any work, you are

f r e e

E3. ^{H.W} Observe bees or look at their pictures. Then colour the picture of the bee given below with the right colours.

H
15/04/25



15/04/25



DATE _____

PAGE _____

पार्ठ-2

मौखिक प्रश्न - उत्तर

1) नन्दा बालु इस वहाँ का
उत्तर नन्दा बालु का तैयार
मुख लगी थी।

2) नन्दा बालु का बगीचा
में क्या दिखाई दिया ?
उत्तर बूब यारे पौधे
दिखाई दिए।



DATE _____

PAGE _____

3) रानी म युक्की न नन्दे
मान को इनाम में क्या
दिया ?

अर। शहर

K
15/04/25

15-04-25

171-200

Date

/

/

Number names

171- One hundred Seventy-One

172-

173-

174-

175-

176-

177-

178-

179-

180-

Date / /

181- One hundred Eighty- one

182-

183-

184-

185-

186-

187-

188-

189-

190-

191- One hundred Ninety - one

192-

193-

194-

195-

196-

197-

198-

199-

200